

System Clinical Oversight
 10 Chiefs, 80 Medical Directors,
 3 Campus Medical Directors

Frias, COO

Spearman, CRO

Fortenberry, PIC

Wulkan, SIC

Stoll,
Ped Ctr Ldr

Jain,
Exec Med.
Dir

DeGrauw
Neuro
Chief

Woods,
Aflac Chief

Miller,
Emg Med
Chief

Rogers,
Pathology
Chief

Kogon,
CT Surg
Chief

Campbell
Cardiac
Chief

Williams,
Plastics
Chief

Magliocca
Liver
Transplant
Chief

Thompson
ENT
Chief

Schmitz,
Ortho
Chief

Neuro
Med. Dir.
[5]:
Kim,
Brahma,
Reisner
*[dotted line
to Wulkan]*,
Chern,
Burns

Aflac
Med. Dir.
[4]:
Olson,
Lew,
Briones,
Boudreaux

Emerg.
Med Med.
Dir. [3]:
Khan,
Beiter,
Hirsh

Path
Med. Dir.
[4]:
Meyers,
Josephson
Paden,
Sysyn

Medicine
Med. Dir.
[23]:
Dykes,
Lewis,
Walson,
Gold
Spafford,
Leu, Garza,
Sedor,
Klick
Petrillo,
Freed,
Sauer,
Simon,
Kirchner,
Schoen,
Pettignano
Lesnick,
Montgomery
Stecenko,
Brooks,
Hamre,
Simoneaux
Grattan-
Smith

Transplant
Med. Dir.
[3]:
Warshaw,
Greenbaum
Romero

Campus
Med. Dir.
[3]:
Taylor,
Mallory,
Tyler-Hill

Cardiac
Med. Dir.
[7]:
Clabby,
Maher,
Kirn,
Kanaan,
Border,
Fischbach,
Sachdeva

Plastics
Med. Dir.
[1]:
Burstein

Surgery
Med. Dir.
[4]:
Kirsch,
Heiss,
Walsh,
Tosone

Trauma
Med. Dir.
[3]:
Bhatia,
Bleacher,
Santore

Anesth.
Med. Dir.
Rept. to
Tosone
[5]:
Kim,
Bonner,
Carter,
Banks,
Kamat

ENT
Med. Dir.
[1]:
Herrmann

Ortho
Med. Dir.
[9]:
Marshall,
Bruce,
Schrader,
Peljovich,
Willimon,
Fabregas,
Busch,
Fletcher,
Devito

Infusion
Med. Dir.
Reporting
to Jain [1]:
Pralhalad

Aflac
Med. Dir.
Rept. to
Boudreaux
[4]:
Gee,
Wasilewski
-Masker,
New,
Daves

CPG Clinical Oversight
39 Practice Directors

Frias, COO

Wulkan, SIC

Sathian,
Int. Exec Med. Dir

Fortenberry, PIC

Jain,
Exec Med. Dir

CPG Practice Directors [14]:

- Eg Surg = Durham
- SR Surg = Bleacher
- Eg ENT = Goudy
- CT Surgery = Kogon
- Eg Anesthesia = Miller
- SR Anesthesia = Beland
- Satellite Anesthesia = Carter
- Pain = Venable
- Neurosurgery = Boydston
- Consult Psych* = Casal
- Physiatry* = Vova
- Dental/ Orthodon* = Thomas
- SR Hospitalists* = Andresen
- Strong4Life = Walsh

CPG Practice Directors [6]:

- Sports Med = Popoli
- Prim. Care = Lennon
- CPC = Greenbaum
- Urgent Care = Pearse
Eechampati, Stewart

CPG Practice Directors [7]:

- Hem/Onc = Boudreaux
- Eg Emergency = Khan
- Genetics = Spiro
- Eg CCM = Stockwell
- Pathology = Rogers
- Palliative Care = Klick
- Eg Sedation = Kamat

CPG Practice Directors [12]:

- Neurology = Philbrook
- Neonatology = Carlton
- GI = Karpen
- Nephrology = Greenbaum
- Rheumatology = Prahalad
- ID = Spearman
- PACS = Simon, Stecenko
- Endo = Muir
- Eg Hospitalists = Taylor
- Radiology = Simoneaux
- Neuropsych = Burns

Fortenberry Structure
37 Direct Reports

Fortenberry, PIC

**Sathian,
Int. Exec
Med. Dir**

**Jain,
Exec Med.
Dir**

**DeGrauw
Neuro
Chief**

**Woods,
Aflac Chief**

**Miller,
Emg Med
Chief**

**Rogers,
Pathology
Chief**

**Kogon, CT
Surg Chief
[dotted line
to Wulkan]**

**Campbell
Cardiac
Chief**

**CPG Practice
Directors [6]:**

- Sports Med = Popoli
- Prim. Care = Lennon
- CPC = Greenbaum
- Urgent Care = Pearse, Stewart, Eechampati

**CPG Practice
Directors [7]:**

- Hem/Onc = Boudreaux
- Eg Emergency = Khan
- Genetics = Spiro
- Eg CCM = Stockwell
- Pathology = Rogers
- Palliative Care = Klick
- Eg Sedation = Kamat

**CPG Practice
Directors
[12]:**

- Neurology = Philbrook
- Neonatology = Carlton
- GI = Karpen
- Nephrology = Greenbaum
- Rheum = Prahalad
- ID = Spearman
- PACS = Simon, Stecenko
- Endo = Muir
- Eg Hospitalists = Taylor
- Radiology = Simoneaux
- Neuropsych = Burns

**Neuro
Med. Dir.
[5]:**

Kim, Brahma, Reisner [dotted line to Wulkan], Chern, Burns

**Aflac
Med. Dir.
[4]:**

Olson, Lew, Briones, Boudreaux

**Aflac Med.
Dir. Rept.
to
Boudreaux
[4]:**
Gee, Wasilewski-Masker, New, Daves

**Emerg.
Med
Med. Dir.
[3]:**

Khan, Beiter, Hirsh

**Path
Med. Dir.
[4]:**

Meyers, Josephson, Paden, Sysyn

**Medicine
Med. Dir.
[23]:**

Dykes, Lewis, Walson, Gold, Spafford, Leu, Garza, Sedor, Klick, Petrillo, Freed, Sauer, Simon, Kirchner, Schoen, Pettignano, Lesnick, Montgomery, Stecenko, Brooks, Hamre, Simoneaux, Grattan-Smith

**Campus
Med. Dir.
[3]:**

Taylor, Mallory, Tyler-Hill

**Cardiac
Med. Dir.
[7]:**

Clabby, Maher, Kim, Kanaan, Border, Fischbach, Sachdeva

Wulkan Structure
26 Direct Reports

Wulkan, SIC

**Goudy,
CPG ENT
Chief**

**Williams,
Plastics
Chief**

**Magliocca
Liver
Transplant
Chief**

**Thompson,
ENT Chief**

**Schmitz,
Ortho
Chief**

**Kogon,
CT Surg
Chief**

CPG Practice Directors [14]:

- Eg Surg = Durham
- SR Surg = Bleacher
- Eg ENT = Goudy
- CT Surgery = Kogon
- Eg Anesthesia = Miller
- SR Anesthesia = Beland
- Satellite Anesth. = Carter
- Pain = Venable
- Neurosurgery = Boydston
- Consult Psych* = Casal
- Psychiatry* = Vova
- Dental/ Orthodon* = Thomas
- SR Hospitalists* = Andresen
- Strong4Life = Walsh

**Plastics
Med. Dir.
[1]:
Burstein**

**ENT
Med. Dir.
[1]:
Herrmann**

**Ortho
Med. Dir.
[9]:
Marshall,
Bruce,
Schrader,
Peljovich,
Willimon,
Fabregas,
Busch,
Fletcher,
Devito**

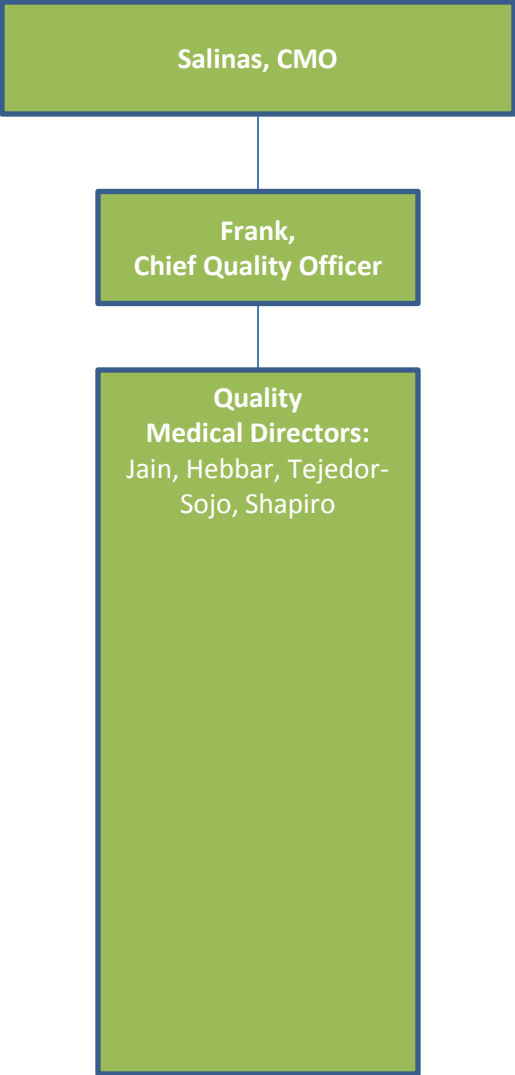
**Surgery
Med. Dir.
[4]:
Kirsch,
Heiss,
Walsh,
Tosone**

**Trauma
Med. Dir.
[3]:
Bhatia,
Bleacher,
Santore**

**Anesth.
Med. Dir.
Rept. to
Tosone
[5]:
Kim,
Bonner,
Carter,
Banks,
Kamat**

**Neuro
Med. Dir.
[1]:
Reisner**

Clinical Quality Oversight



Medical Director Detail

Cardiac		
Physician's Name	Position Title	Supervising Physician
Martha Clabby, MD	Med Dtr Cardiac Step Down Unit	R Campbell, MD
Kevin Maher, MD	Med Dtr Cardiac Intensive Care Unit	R Campbell, MD
Dennis Kim, MD	Med Dtr Cardiac Cath Lab	R Campbell, MD
Usama Kanaan, MD	Med Dtr Pulmonary Hypertension Program	R Campbell, MD
William Border, MD	Med Dtr Non-Invasive Cardiac Imaging	R Campbell, MD
Peter Fischbach, MD	Med Dtr Cardiac Fellowship Program	R Campbell, MD
Ritu Sachdeva, MD	Med Dtr Cardiovascular Imaging Research	R Campbell, MD

Hem/Onc		
Physician's Name	Position Title	Supervising Physician
Jeanne Boudreaux, MD	Hem/Onc Med Dtr	B Woods, MD
Beatrice Gee, MD	Sickle Cell Med Dtr HS	J Boudreaux, MD
Karen Wasilewski-Masker, MD	Hem/Onc Med Dtr at SR	J Boudreaux, MD
Tamara New, MD	Hem/Onc Med Dtr at SR	J Boudreaux, MD
Tom Olson, MD	Chief of Quality	B Woods, MD
Michael Briones, MD	Fellowship Program Director	B Woods, MD
Glen Lew, MD	Fellowship Program Associate	B Woods, MD
Marla Daves, MD	IT Services Director	J Boudreaux, MD

Medical Director Detail

Medicine		
Physician's Name	Position Title	Supervising Physician
Francine Dykes, MD	Med Dtr Neonatal	D Carlton, MD
Kiran Hebbar, MD	Med Dtr TICU -ECH	J Stockwell, MD
Karen Walson, MD	Med Dtr TICU/PICU	J Fortenberry, MD
Karen Walson, MD	Med Dtr Neuro Critical Care	T DeGrauw, MD
Francine Dykes, MD	Med Dtr Neonatal	D Carlton, MD
Patrick Spafford, MD	Med Dtr NICU	J Fortenberry, MD
Toni Petrillo, MD	Med Dtr PICU - ECH	
Matthew Paden, MD	Med Dtr Apheresis/ECH	B Rogers, MD
Matthew Paden, MD	Med Dtr ECMO/ECH	J Stockwell, MD
Cassandra Josephson, MD	Med Dtr Transfusion, Tissue & Apheresis	B Rogers, MD
Gregory Sysyn, MD	Ned Dtr Apheresis/SR	B Rogers, MD
Dawn Simon, MD	Med Dtr Aerodigestive Services	J Fortenberry, MD
Kevin Kirchner, MD	Med Dtr Cystic Fibrosis Affiliate Program SR	
Julie Sedor, MD	Med Dtr Technology Dependent	J Fortenberry, MD
Jose Garza, MD	Med Dtr Motility	J Fortenberry, MD
Bess Schoen, MD	Med Dtr Improve Care Now Program	J Fortenberry, MD
Benjamin Gold, MD	Improve Care Now Program Consultant	J Fortenberry, MD
Benjamin Gold, MD	Med Dir - Aerodigestive Quality Outcomes	J Fortenberry, MD
William Meyers, MD	Improve Care Now Program Consultant	B Rogers, MD
Glen Lewis, MD	Improve Care Now Program Consultant	J Fortenberry, MD
Damien Grattan-Smith, MD	Med Dtr SR Radiology	J Fortenberry, MD

Medical Director Detail

Medicine [cont.]		
Physician's Name	Position Title	Supervising Physician
Bob Pettignano, MD	HeLP Program Consultant	J Fortenberry, MD
Bob Pettignano, MD	Med Dtr Medicine SL Quality	J Fortenberry, MD
Bob Pettignano, MD	HeLP Program Consultant	J Fortenberry, MD
	Med Dtr Diabetes Quality	
Burt Lesnick, MD	Med Dtr Pulmonology Services	J Fortenberry, MD
Gary Freed, DO	Med Dtr Apnea	J Fortenberry, MD
Gary Montgomery, MD	Med Dtr Sleep Program	J Fortenberry, MD
Roberta Leu, MD	Med Dtr Egleston Sleep	J Fortenberry, MD
Arlene Stecenko, MD	Med Dtr Egleston Emory Sleep	J Fortenberry, MD
Barry Warshaw, MD	Med Dtr Kidney Transplant	
Rene Romero, MD	Md Dtr of Liver Transplant	
Rene Romero, MD	Med Dtr of Intestinal Rehab	
Sampath Prahalad, MD	Med Dtr of Infusion Svcs, Transplant Clinic	L Jain, MD
Cary Sauer, MD	Med Dtr of Endoscopy Services	J Fortenberry, MD
Jeff Klick, MD	Dtr, Pediatric Palliative Care	R Bonner, MD
Ann-Marie Brooks, MD	Med Dtr HS Asthma Center	J Fortenberry, MD
James Beiter, MD	Director, ED/Urgent Care at SR	C Miller, MD
James Beiter, MD	SR ED MD	C Miller, MD
Naghma Khan, MD	ECH ED MD	C Miller, MD
Daniel Hirsh, MD	Med Dtr Nurse Advice Line	C Miller, MD
Toni Petrillo, MD	Transport Co-Med Dtr	J Fortenberry, MD
Sharon Hamre, MD	Transport Co-Med Dtr	J Fortenberry, MD
Steve Simoneaux, MD	Med Dtr ECH Radiology	J Fortenberry, MD

Medical Director Detail

Neurosciences		
Physician's Name	Position Title	Supervising Physician
Hyunmi Kim, MD	Med Dtr Epilepsy & EEG Labs/ECH & SR	T DeGrauw, MD
Barun Brahma, MD	Med Dtr Spine	T DeGrauw, MD
Andrew Reisner, MD	Med Dtr Trauma/Concussion	T DeGrauw, MD [dotted to Wulkan]
Joshua Chern, MD, PhD	Med Dtr Neurosciences Quality	T DeGrauw, MD
Tom Burns, Psy D	Concussion Program Research Director	T DeGrauw, MD

Ortho		
Physician's Name	Position Title	Supervising Physician
David Marshall, MD	Med Dtr Sports Medicine	M Schmitz, MD
Bob Bruce, MD	Med Dtr Neuromuscular	M Schmitz, MD
Tim Schrader, MD	Med Dtr Hip	M Schmitz, MD
Allan Peljovich, MD	Med Dtr Hand	M Schmitz, MD
Cliff Willimon, MD	Med Dtr Outcomes	M Schmitz, MD
Jorge Fabregas, MD	Med Dtr Orthopedic Education Program	M Schmitz, MD
Michael Busch, MD	Med Dtr Sports Med Surg & Ortho Felship	M Schmitz, MD
Nick Fletcher, MD	Med Dtr	M Schmitz, MD
Dennis Devito, MD	Med Dtr	M Schmitz, MD

Medical Director Detail

Surgery		
Physician's Name	Position Title	Supervising Physician
Ike Kim, MD	Anesthesia at SR	S Tosone, MD
Deborah Carter, MD	Anesthesia at SB	S Tosone, MD
Rick Bonner, MD	Anesthesia at MM	S Tosone, MD
	Anesthesia at ECH	M Wulkan, MD
Fernando Burstein, MD	Med Dtr Craniofacial Disorders	J Williams, MD
Brian Herrmann, MD	Med Dtr Hearing Loss Program	J Thompson, MD
Andy Kirsch, MD	Med Dtr Surgical Robotics	M Wulkan, MD
Steve Tosone, MD	Med Dtr Anesthesia Quality	M Wulkan, MD
Kurt Heiss, MD	Med Dtr Surgical Quality	M Wulkan, MD
	Med Dtr Surgical Outcomes	
Pradip Kamat, MD	Med Dtr Sedation Services/ECH	S Tosone, MD
David Banks, MD	Med Dtr Sedation Services/SR	S Tosone, MD
Stephanie Walsh, MD	Med Dtr Health For Life Program	M Wulkan, MD
John Bleacher, MD		M Wulkan, MD
Amina Bhatia, MD		M Wulkan, MD
Matthew Santore, MD		M Wulkan, MD
Stephanie Walsh, MD	Med Dtr Health For Life Program	M Wulkan, MD